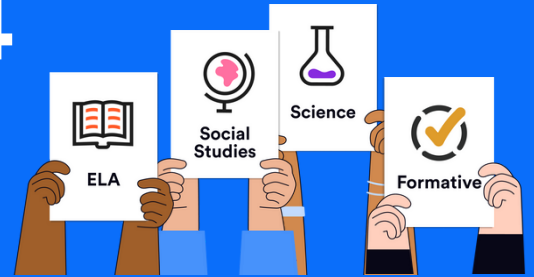


# September 2024 Newsletter



## WELCOME BACK EDUCATORS!

We're excited to start a new school year with you! To help kick the year off strong, we've gathered **essential resources** to help get you started. Let's work together to make this year unforgettable!

### NEWSELA

- [Back to School Hub](#)
- [Login Assistance](#)
- [Getting Started Guide](#)
- [Engagement Kit](#)

### FORMATIVE

- [Back to School Hub](#)
- [Login Assistance](#)
- [Getting Started Guide](#)
- [Engagement Kit](#)



## BLOG POST BUZZ

- [Labor Day Lesson Plans To Kick Off the School Year](#)
- [Reading and Social Studies: How To Support Struggling Readers](#)
- [What Is Formative Assessment? Everything You Need To Know](#)
- Check out our [On-Demand Webinars](#) for additional learning opportunities.

## NEED SUPPORT?



[Contact Newsela Support](#)

## NEWSELA CONTENT RESOURCES



[September Content Calendar](#)


[Newsela Scavenger Hunt](#)


### Noteworthy Dates:

- Hispanic Heritage Month ([ELA](#), [SS](#), [Sci](#))
- **9/2** Labor Day ([ELA](#), [Sci](#), [SS](#))
- **9/8** International Literacy Day ([ELA](#))
- **9/11** Patriot's Day ([ELA](#), [SS](#), [Sci](#))
- **9/17** Smithsonian Day ([SS](#))
- **9/22** First day of Fall ([ELA](#), [Sci](#))





## NEW PRODUCT UPDATES

 [NEWSela](#): Content promotion, new search, reporting, implementation guide and more!

 [Check for Understanding](#) feature designed to promote close reading, ensuring your students understand what they are reading before continuing with the text.

 [Novel Studies Collection](#)

 **Formative** has new features to help save you time. Check out our new [Starter Lessons](#) for exemplar lesson templates!

 [Practice Sets](#) to help reinforce concepts and key terms in Formative.